



APPLICABLE PARTS
STE001, STE002, STEL12,
STEL24, STEL36, STEL48,
STEERATT-001,
STEERATT-002

**PLEASE READ THIS IMPORTANT USAGE
AND SAFETY INFORMATION BEFORE
USING THIS PRODUCT !**

Steer-Stik is designed to act as a rigid hands free load control and guiding device that can be used to push, pull, guide, steer, position & manipulate suspended loads and materials. The tool head is designed to perform multiple functions, pushing, pulling, grabbing, snagging and holding. Steer-Stik allows a user to maintain distance from suspended loads while being able to push, pull and move around or with the suspended load. Steer-Stik can be used to help control, position or steer suspended loads such as: forms, components, equipment, parts, rebar, steel coils, assemblies and more. Our heavy duty aluminum tool head design enables a wide array of uses in many different suspended load and material handling operations. A strong yet lightweight FRP tube along with a solid D-Handle grip or straight rubber grip give the user unparalleled control, feel and precision when it comes to positioning, pulling, pushing and material handling operations.

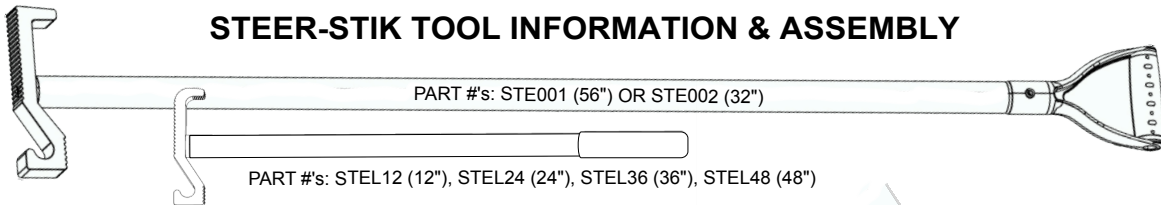
!! WARNINGS !!

Crush and Pinch Points: Avoid putting hands or fingers on or near tool head when engaged with a suspended load.

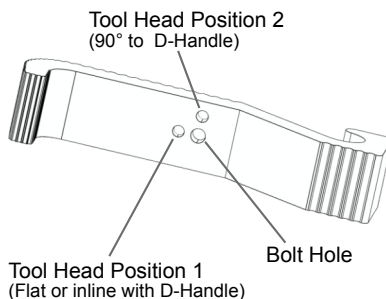
Abuse/Impacts: **DO NOT USE AS A PRY BAR** Tool handle material is not designed to be used as a pry bar. Tool head is water jetted from 6061 aluminum and is very durable but can be damaged due to misuse, abuse and harsh work environments. The tool head is considered a wearable and replaceable item. Contact ADAMAR Industries for replacement parts.

Tool Check: Check tool head and bolt security before each use. Bolt and tool head must be tight and secure. Do not use tool if severe or substantial damage has occurred to the tool handle. Minor abrasions, gouges, scratches, dings are normal wear. If tool handle is cracked, crushed or substantially damaged, replacement of the tool is recommended.

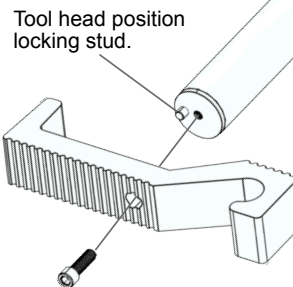
STEER-STIK TOOL INFORMATION & ASSEMBLY



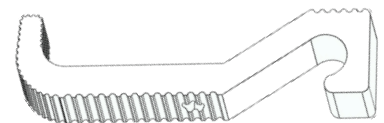
TOOL HEAD POSITIONS Tool Head Back View



TOOL HEAD ASSEMBLY



**TIGHTEN BOLT FIRMLY TO PREVENT LOOSENING.
CHECK BOLT AND TOOL HEAD FOR SECURITY
BEFORE EACH USE.**



PART: STEHD-01
Replacement For: STE001, STE002



PART: STELHD-02
Replacement For: STEL12, STEL24,
STEL36 & STEL48

Includes:
One 5/16" -18 x 1" SS Socket Head Bolt
One 1/4" Allen Wrench

EXAMPLE USES & FEATURES



LOAD
CONTROL



PUSH



PULL



HOOK
SNAG



POSITION



ROTATING
HEAD/HANDLE



NOT A PRY BAR



CALIFORNIA PROPOSITION 65 WARNING

WARNING: This product contains chemicals known to the State of California to cause cancer and birth defects or other reproductive harm. For more information: www.P65Warnings.ca.gov

Warranty:

This product is warranted against manufacturing defects for a period of 1 year. Contact ADAMAR Industries LLC at info@adamarindustries.com or visit <http://www.adamarindustries.com> to initiate a warranty claim via our contact form. Any signs of misuse, abuse, excessive damage, modifications, alterations as well as normal/abnormal/expected/unexpected wear or damage will not be considered as a cause for a warranty claim.

Disclaimer:

ADAMAR Industries LLC neither assumes nor accepts any liability and shall be held harmless for damages resulting from the use or misuse of this product. The buyer/user agrees that he/she is responsible for all damages and injuries caused by use or misuse of this product, which includes death, dismemberment, injuries to self and others, property damages and product damages. By purchasing or using this product or providing this product for use, you agree to these terms.

Visit <https://adamarindustries.com> for more information, videos and usage information. Questions, concerns and support
Call 1 (888) 232-6275 M-F 9AM-5PM.