

**PLEASE READ THIS IMPORTANT USAGE AND SAFETY INFORMATION BEFORE USING THIS PRODUCT!**

Sling-Stik products are designed to act as a rigid tag line or control device that can be used to help control suspended loads. Sling-Stik allows a user to maintain distance from suspended loads while being able to push, pull and grab onto a suspended load without using hands. The Sling-Stik product line has many attachment options available and custom attachments can be designed for specific jobs. Attachments for chain and wire slings come in many sizes, these attachments allow chain slings to pass through the opening and remain captured inside the attachment for push/pull control. Other attachment options include various hook styles for hooking onto objects, pulling, pushing, snagging and grabbing various objects and control points. The Sling-Stik product line includes many standard duty models with a 1.6" diameter tool handle and many lightweight tools with a 1.1" diameter tool handle.

## !! WARNINGS !!

**Crush and Pinch Points:** Avoid putting hands or fingers on or near hook when engaged with a suspended load.

**Abuse/Impacts: DO NOT USE AS A PRY BAR** Attachments are laser cut out of 1/4" steel or aluminum. The attachments are very strong but can be bent due to misuse, abuse and harsh work environments. Attachments are considered a wearable and replaceable item. Contact ADAMAR Industries for replacement parts.



**CALIFORNIA PROPOSITION 65 WARNING**

WARNING: This product contains chemicals known to the State of California to cause cancer and birth defects or other reproductive harm. For more information: [www.P65Warnings.ca.gov](http://www.P65Warnings.ca.gov)

**CARE & MAINTENANCE:** Visually inspect the tool before each use. There should be no major damage (cracks or loose components). Scrapes, scratches, dings, abrasions are expected during normal use. Replace tool if major damage is discovered. Keep tools clean and free from substances that could reduce your grip. (oil, grease etc.) **DO NOT USE AS A PRY BAR!**

## Installing & Changing Attachments

**EACH ATTACHMENT OPTION PACKAGE INCLUDES**

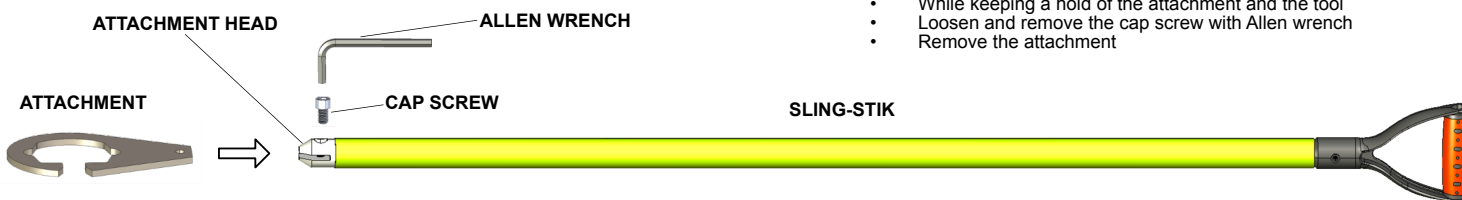
- Attachment or Attachments (depending on attachment option purchased)
- 1 - 3/8 x 5/8 SS Socket Head Cap Screw
- 1 - 5/16 Allen Wrench

**INSTALL ATTACHMENT**

- While holding the attachment in one hand and the tool in another
- Insert the 1.5" wide flat side into the attachment head slot
- Line up the holes in the attachment head slot and the attachment
- Insert the cap screw and tighten down firmly and securely

**REMOVE/CHANGE ATTACHMENT**

- While keeping a hold of the attachment and the tool
- Loosen and remove the cap screw with Allen wrench
- Remove the attachment



**KEEP YOUR ATTACHMENTS ACCESSIBLE AND ORGANIZED**

It's a good idea to keep your tools and attachments in a convenient and easy to access location near the area where work is being performed. A tool storage area or a no-touch tool storage board is a great way to keep track of your tools and attachments.

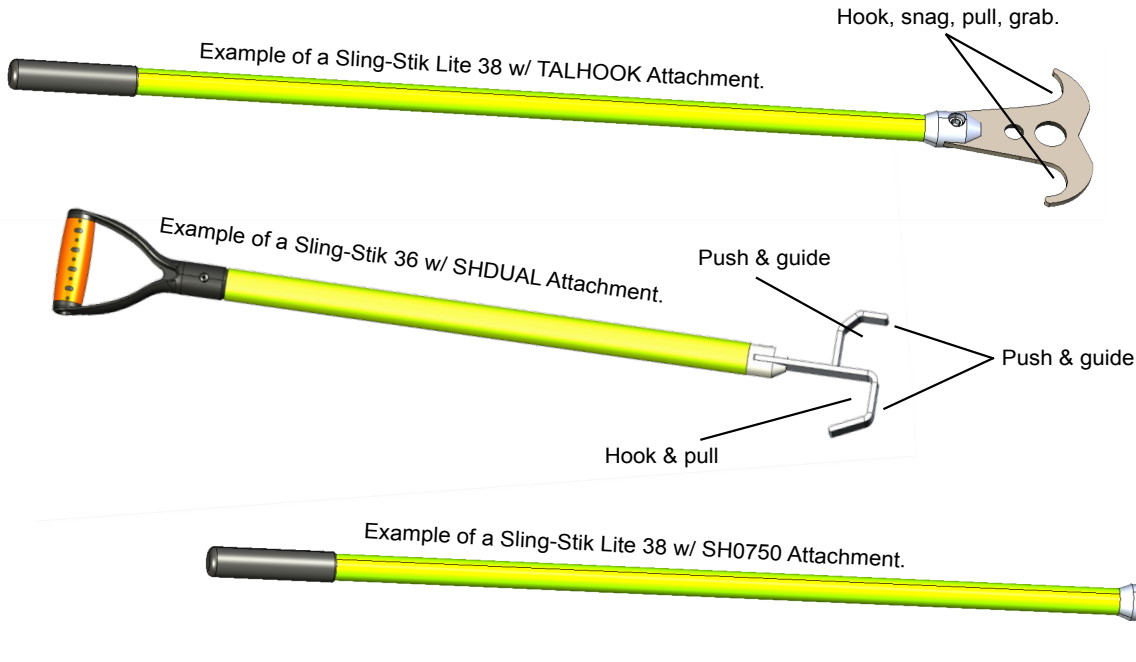
## Warranty:

This product is warrantied against manufacturing defects for a period of 1 year. Contact ADAMAR Industries LLC at [info@adamarindustries.com](mailto:info@adamarindustries.com) or visit <http://www.adamarindustries.com> to initiate a warranty claim via our contact form. Any signs of misuse, abuse, excessive damage, modifications, alterations as well as normal/abnormal/expected/unexpected wear or damage will not be considered as a cause for a warranty claim.

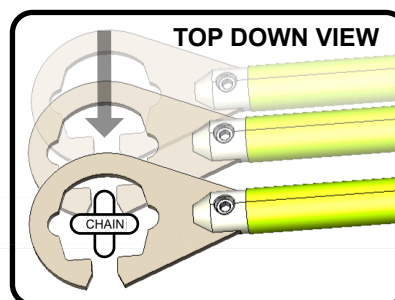
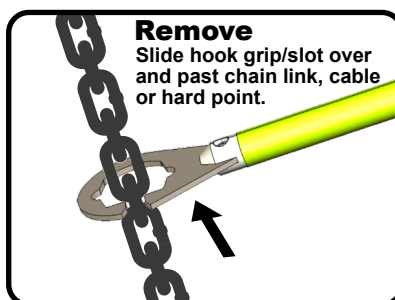
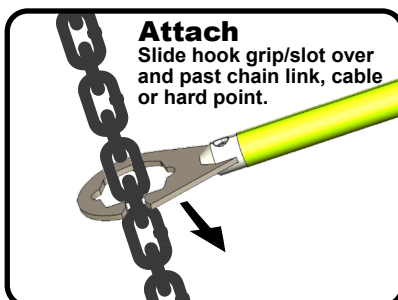
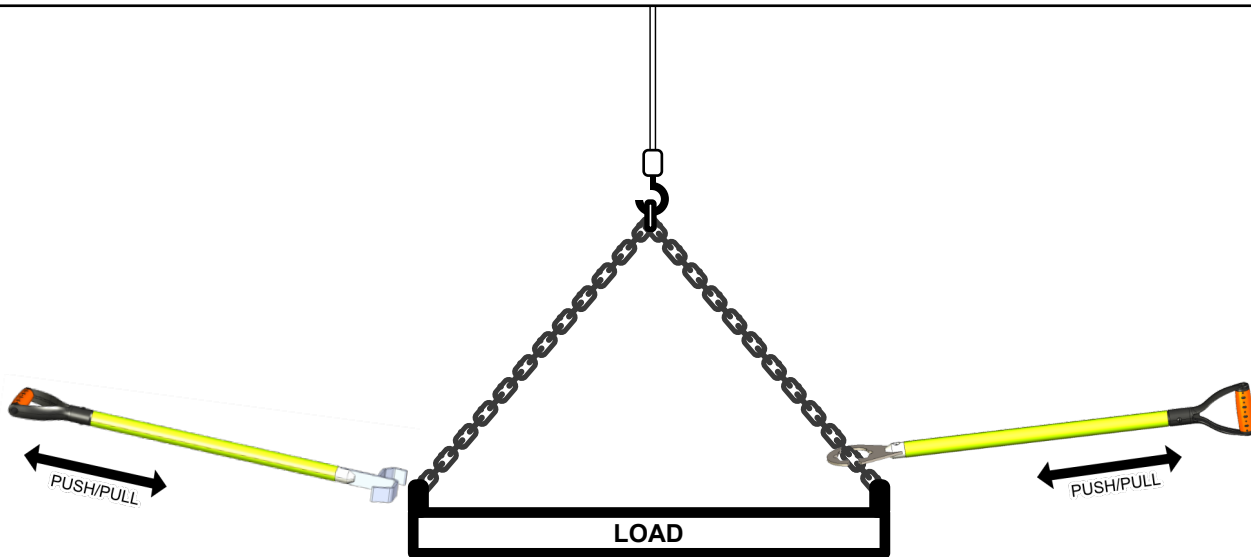
## Disclaimer:

ADAMAR Industries LLC neither assumes nor accepts any liability and shall be held harmless for damages resulting from the use or misuse of this product. The buyer/user agrees that he/she is responsible for all damages and injuries caused by use or misuse of this product, which includes death, dismemberment, injuries to self and others, property damages and product damages. By purchasing or using this product or providing this product for use, you agree to these terms.

Visit <https://adamarindustries.com> for more information, videos and usage information. Questions, concerns and support Call 1 (888) 232-6275 M-F 9AM-5PM.



## LOAD CONTROL & POSITIONING



**Do Not Use  
As Pry Bar.**